

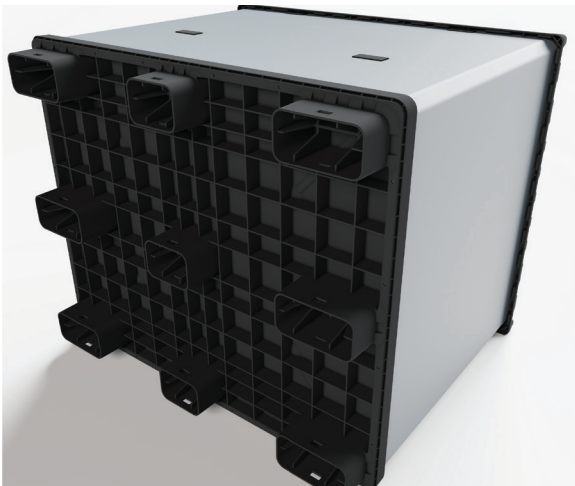
PERSIAN SANAT

SB 1

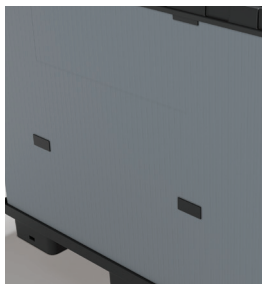
Features of this type of pallet box include optimal design, foldability and light weight. The body of this type of pallet box can be folded in only a few steps, which takes up 80% less space and will be very economical for return transport.



The material used to manufacture this type of pallet is food-grade.



The lid capable of being strapped



Foldable wall



POWER OF QUALITY











PERSIAN SANAT

Art No.

PS-1210-SB1

Previous Name

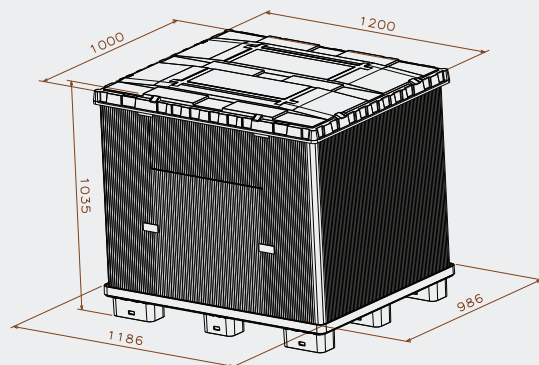
Foldable Pallet Box

Net weight (kg)	32 ± 0.5
Bottom type	9 Legs
External dimension (mm)	1200×1000×1020
Internal dimension (mm)	1130×920×870
Capacity (L)	900
Temperature stability (°c)	-20 To +40
Stacking load (kg)	500 
Static load (kg)	500 
Dynamic load (kg)	250 
Racking load (kg)	- 
Loading quantities (pcs/approx.)	250  320 
Surface type	-
Safety rims (mm)	-
Material	HDPE-PPC
Color	  Other colors on request
Logo option	Print & Embossment

the load capacities are based on an evenly distributed loads and it can vary according to the type of load.



Container 40 HC
Jumbo Truck



All dimensions may vary ± 5mm due to production process and raw materials characteristics.