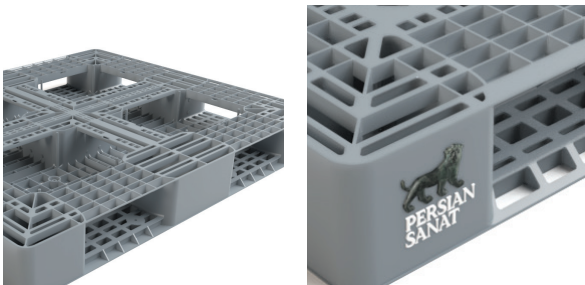
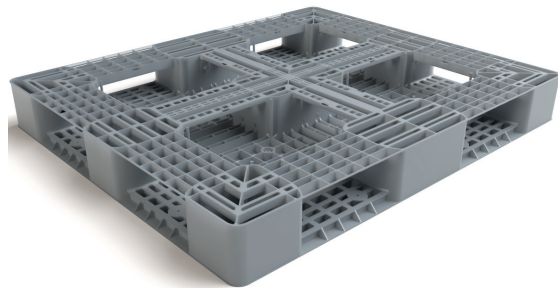


PS 2

This pallet is designed to be used especially in the petrochemical and chemical industries and it is compatible with any logistical challenges that minimize the risk of product damage.

The design of the back of this pallet is 6 connected runners, which facilitates its movement on the conveyor. This pallet is much lighter than its wooden counterparts and as a result, it facilitates logistics operations of warehousing and transportation.



Capable of being used in racking systems due to having connected six runners

Logo print or embossment



POWER OF QUALITY









PERSIAN SANAT

Art No.

PS-1311-PS2

Previous Name

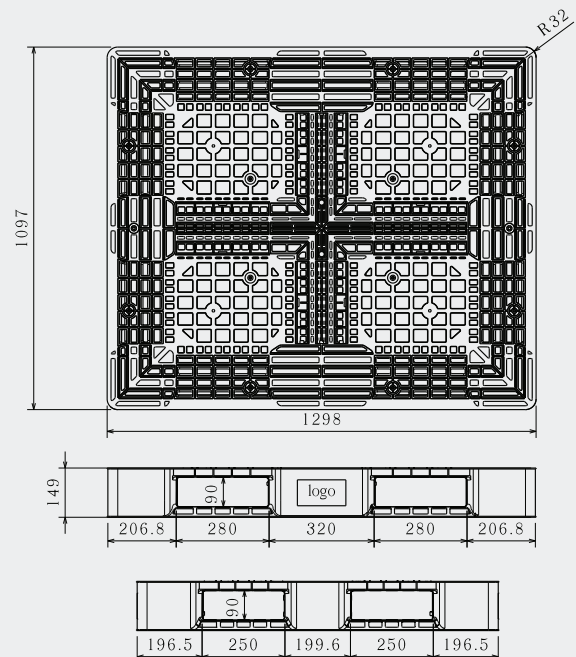
IPL1311/6R-2

Net weight (kg)	15.5 ± 0.5
Bottom type	6 Runners
Dimension (mm)	1300×1100×150
Temperature stability (°C)	-20 To +40
Static load (kg)	5000 
Dynamic load (kg)	1250 
Racking load (kg)	400 
Reinforcement profiles	-
Loading quantities (pcs/approx.)	320  374 
Surface type	Open
Safety rims (mm)	-
Material	HDPE
Pallet color	   Other colors on request
Logo option	Print & Embossment

the load capacities are based on an evenly distributed loads and it can vary according to the type of load.



Container 40 HC
Jumbo Truck



All dimensions may vary ± 5mm due to production process and raw materials characteristics.