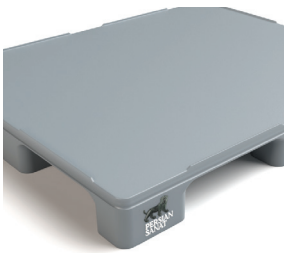
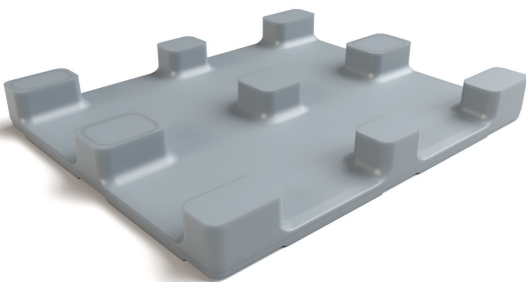
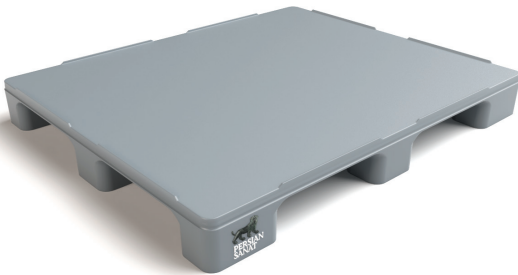


# PERSIAN SANAT

## HP 4

This type of pallet is easy to clean and dry due to having a smooth and completely closed deck. HP plastic pallets family offers the perfect combination of mechanical performance and hygienic requirements. Our fully closed pallets have no cavities, which prevent dust from accumulating. No metal reinforcement is used in its body. Due to not designing runners in this type of pallet, it is possible to use a pallet jack on all four sides.

The material used to manufacture this type of pallet is food-grade.



Capable of using pallet jack on four sides

Logo print or embossment



POWER OF QUALITY



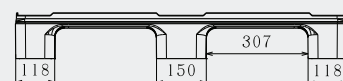
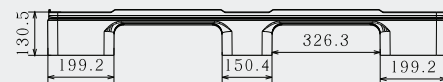
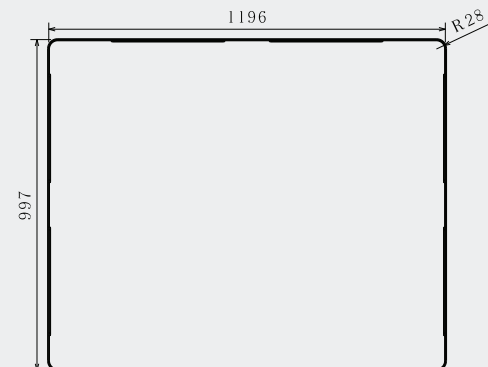
# PERSIAN SANAT

Art No.  
**PS-1210-HP4**  
Previous Name  
**HP1210/9L**

Net weight (kg)	16.5 ± 0.5	
Bottom type	9 Legs	
Dimension (mm)	1200×1000×130	
Temperature stability (°c)	-20 To +30	
Static load (kg)	5000	
Dynamic load (kg)	1250	
Racking load (kg)	-	
Reinforcement profiles	-	
Loading quantities (pcs/approx.)	550	650
Surface type	Closed	
Safety rims (mm)	7	
Material	HDPE	
Pallet color	Other colors on request	
Logo option	Print	

the load capacities are based on an evenly distributed loads and it can vary according to the type of load.

Container 40 HC  
 Jumbo Truck



All dimensions may vary ± 5mm due to production process and raw materials characteristics.