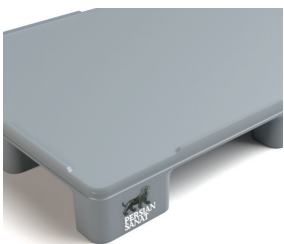
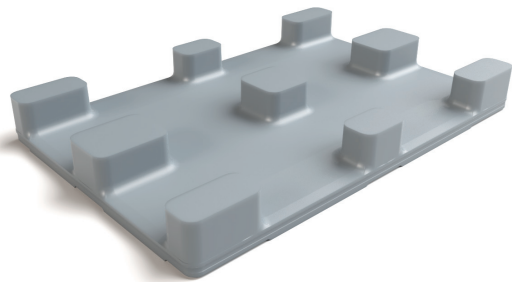
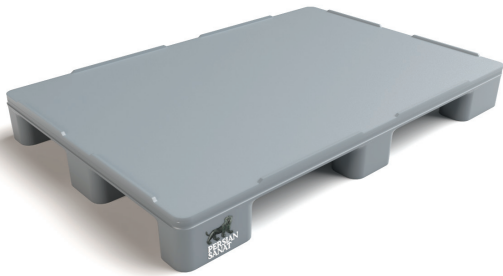


PERSIAN SANAT

HP 2-PP

This type of pallet is easy to clean and dry due to having a smooth and completely closed deck. HP plastic pallets family offer the perfect combination of mechanical performance and hygienic requirements. Our fully closed pallets have no cavities, which prevent dust from accumulating. It is made of suitable Polypropylene food-grade material, no metal reinforcement is used in its body. Due to not designing runners in this type of pallet, it is possible to use a pallet jack on all four sides. The material used to manufacture this type of pallet is food-grade.



Capable of using pallet jack on four sides

Logo print or embossment



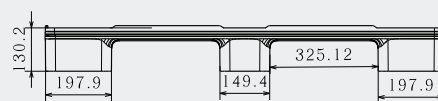
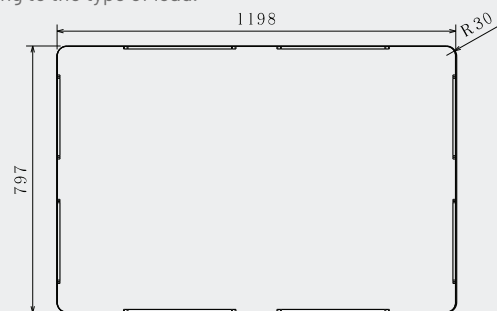
PERSIAN SANAT

Art No.
PS-1208-HP2-PP
Previous Name
HP1208/9L

Net weight (kg)	13 ± 0.5
Bottom type	9 Legs
Dimension (mm)	1200×800×130
Temperature stability (°c)	-20 To +60
Static load (kg)	5000
Dynamic load (kg)	1250
Racking load (kg)	-
Reinforcement profiles	-
Loading quantities (pcs/approx.)	700 780
Surface type	Closed
Safety rims (mm)	7
Material	PP
Pallet color	Other colors on request
Logo option	Print

the load capacities are based on an evenly distributed loads and it can vary according to the type of load.

Container 40 HC
 Jumbo Truck



All dimensions may vary ± 5mm due to production process and raw materials characteristics.



POWER OF QUALITY