

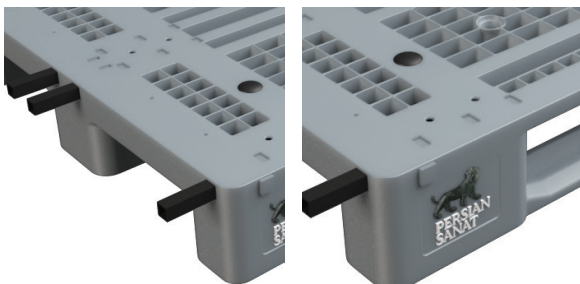
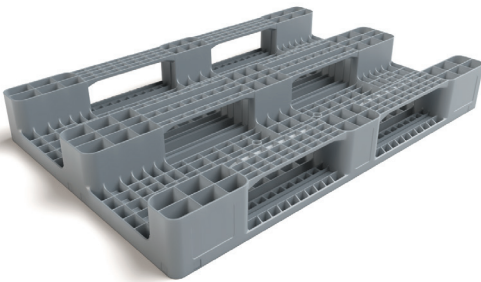
ES 1 (Four reinforcement profiles)

A Monoblock euro pallet with three integrated runners which is light weight but it is capable of bearing heavy loads in high rack system. It is an ideal pallet for automatic conveyor systems due to its dimension and precise design.

It is suitable to be used in the distribution network of non-food environments, e.g., in intra-logistics processes, automotive industry and retailers.



This type of pallet with integrated reinforcement profiles is an ideal pallet in the heavy duty category. Its strength and durability makes it suitable for high racking systems and automated process.



Capable of racking system

Logo print or embossment



PERSIAN SANAT

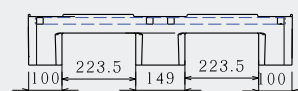
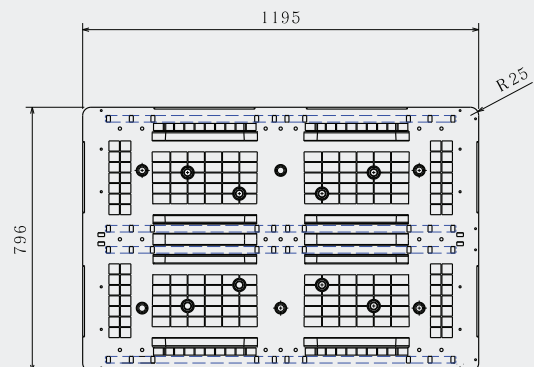
Art No.
PS-1208-ES1-4P

Previous Name
IPL1208/3R/4P

Net weight (kg)	16.5 ± 0.5
Bottom type	3 Runners
Dimension (mm)	1200×800×150
Temperature stability (°c)	-20 To +40
Static load (kg)	5000
Dynamic load (kg)	1500
Racking load (kg)	1250
Reinforcement profiles	4
Loading quantities (pcs/approx.)	550 700
Surface type	Open
Safety rims (mm)	7
Material	HDPE
Pallet color	Other colors on request
Logo option	Print & Embossment

the load capacities are based on an evenly distributed loads and it can vary according to the type of load.

Container 40 HC
 Jumbo Truck



All dimensions may vary ± 5mm due to production process and raw materials characteristics.



POWER OF QUALITY