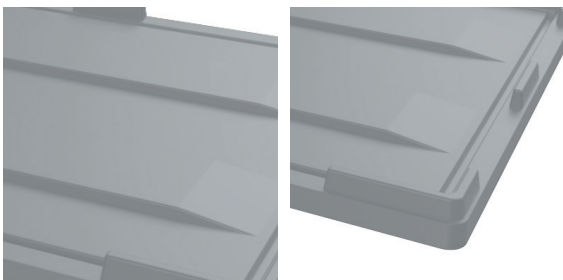
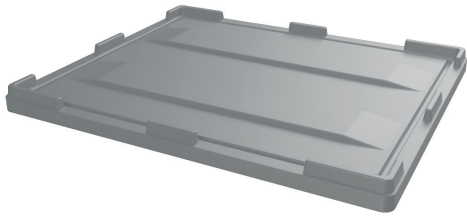


PERSIAN SANAT

BPL 1

Pallet box lid in dimensions of 120 * 100 reduces damage to the product during transport. The door is made of high-quality polyethylene and covers the entire surface of the pallet box.

- Integrated locking corners for safe storage of boxes
 - Special grooves for integrated straps
- The material used to manufacture this type of pallet is food-grade.



Grooves for strapping

Integrated locking corners



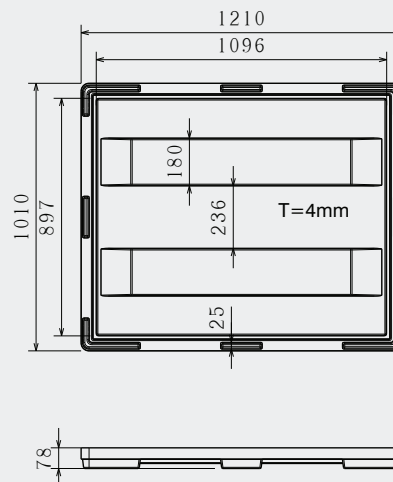
PERSIAN SANAT

Art No.
PS-1210-BPL1
Previous Name
BPL 1210

| | | |
|----------------------------------|-------------------------|------|
| Net weight (kg) | 7.5 ± 0.5 | |
| Bottom type | - | |
| External dimension (mm) | 1210×1010×40 | |
| Internal dimension (mm) | 1200×1000×40 | |
| Capacity (L) | - | |
| Temperature stability (°c) | -20 To +40 | |
| Stacking load (kg) | - | |
| Static load (kg) | - | |
| Dynamic load (kg) | - | |
| Racking load (kg) | - | |
| Loading quantities (pcs/approx.) | 1300 | 1560 |
| Surface type | - | |
| Safety rims (mm) | - | |
| Material | HDPE | |
| Color | Other colors on request | |
| Logo option | Embossment | |

the load capacities are based on an evenly distributed loads and it can vary according to the type of load.

Container 40 HC
 Jumbo Truck



POWER OF QUALITY

All dimensions may vary ± 5mm due to production process and raw materials characteristics.